



Asher Application Final Design Presentation

Team 5: Fire Watch

AGENDA

Description

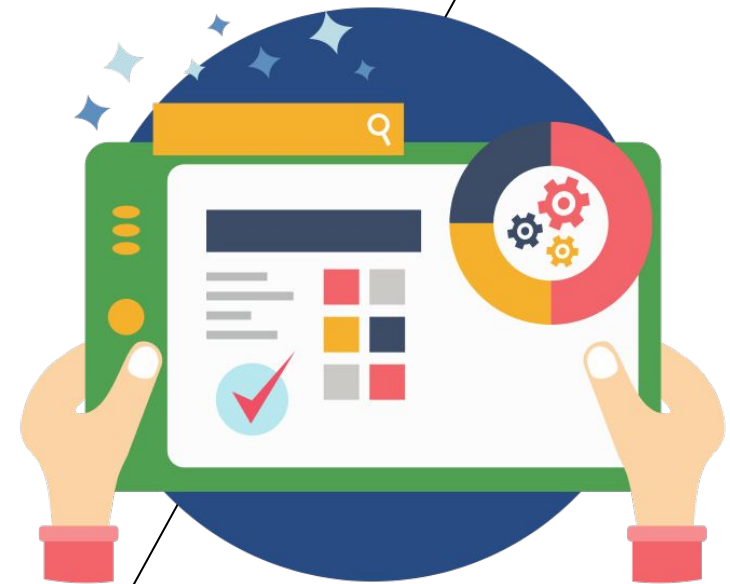
Demonstration of UI

Usability Concerns

Development Status and Future Plans

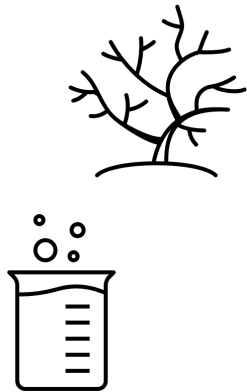
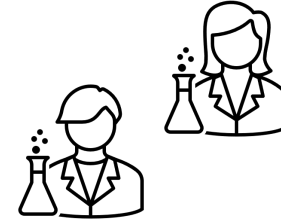
DESCRIPTION

The app acts as a median to store the data collected by the post fire assessment team or scientist in an organized manner, so later when there is need to analyze said information it can find that information easily.



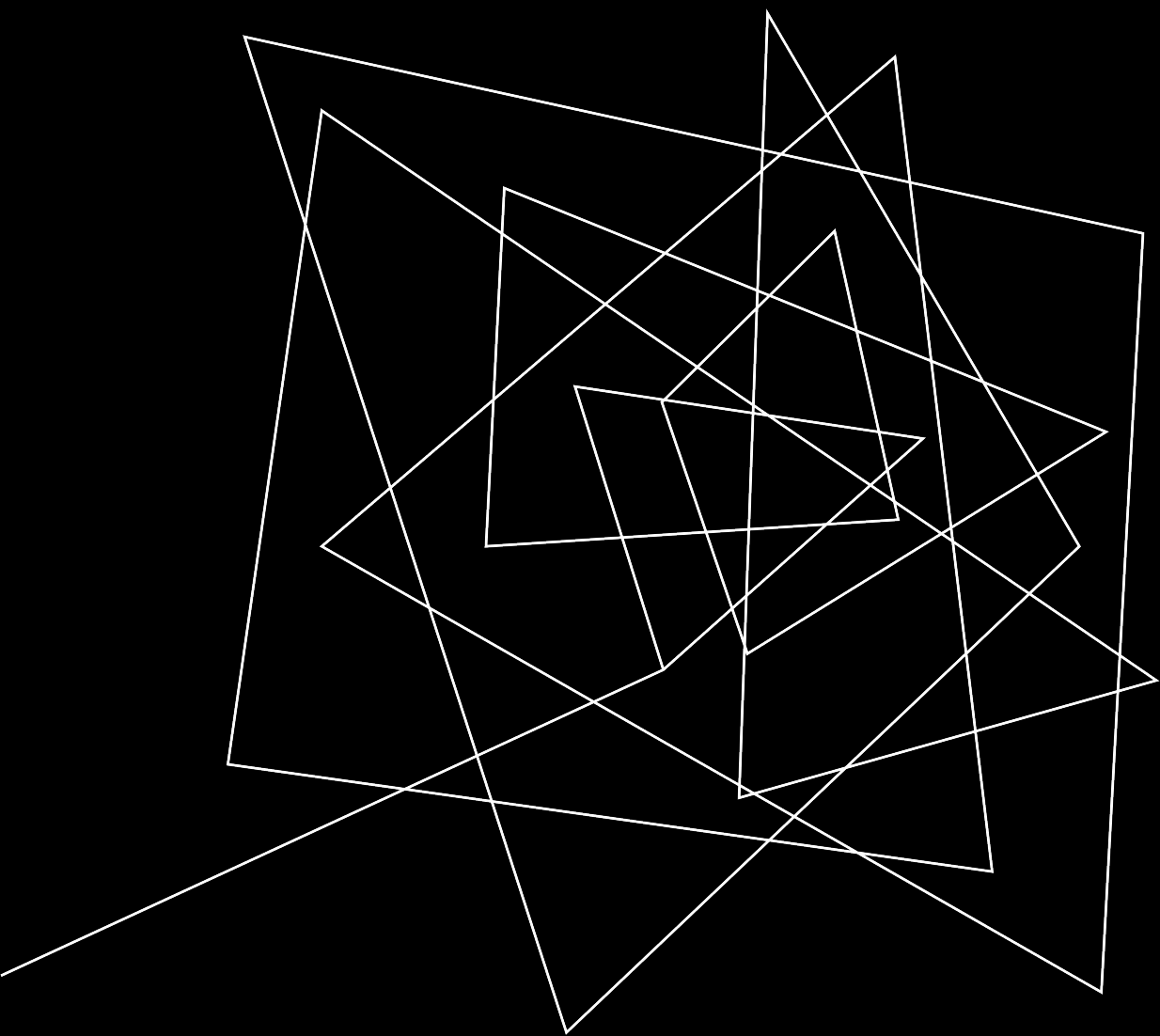
Users:

- Scientist: Analyzes the ash samples uploaded to the database by other scientists or the post fire assessment team.
- Post fire-assessment team: Helps with data collection of the ash.

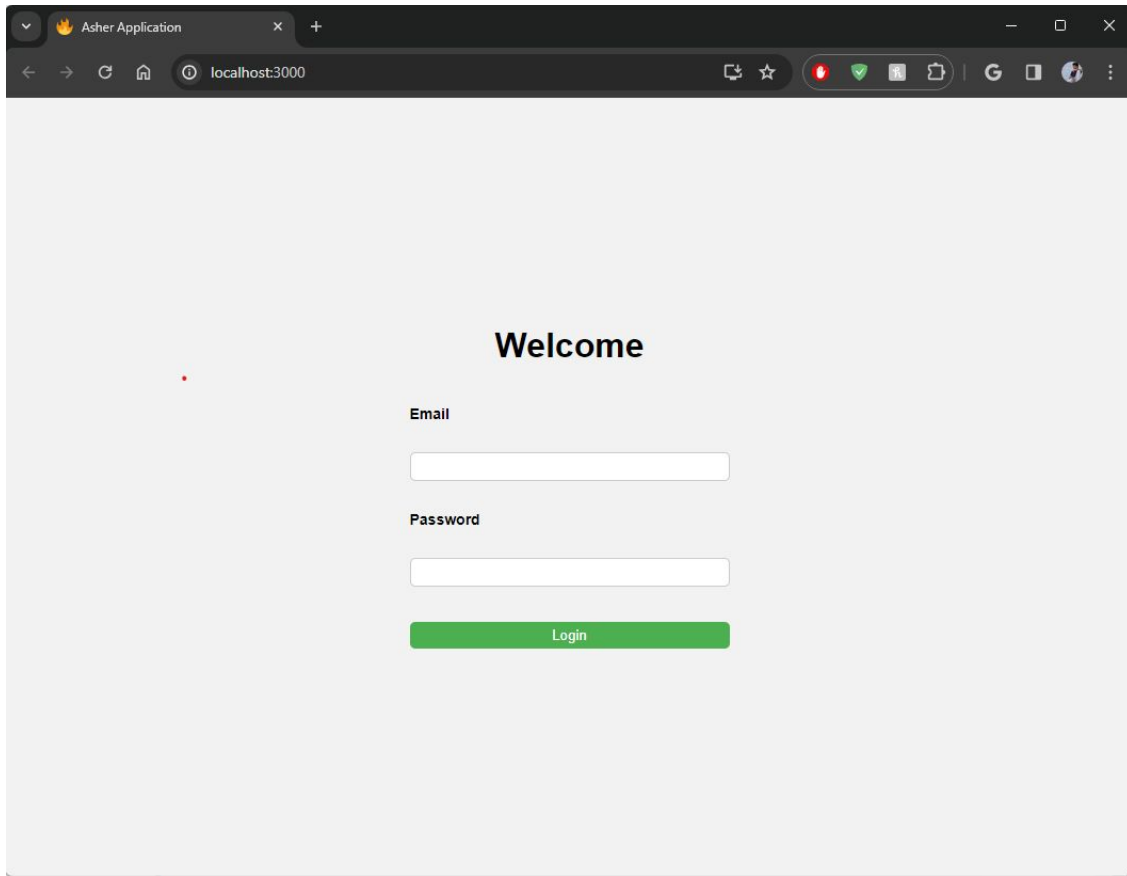


Environment:

- On-Site: The post fire-assessment teams will be collecting data at the sites of recent wildfires
- Lab: The scientists will be analyzing the data collected in controlled environments

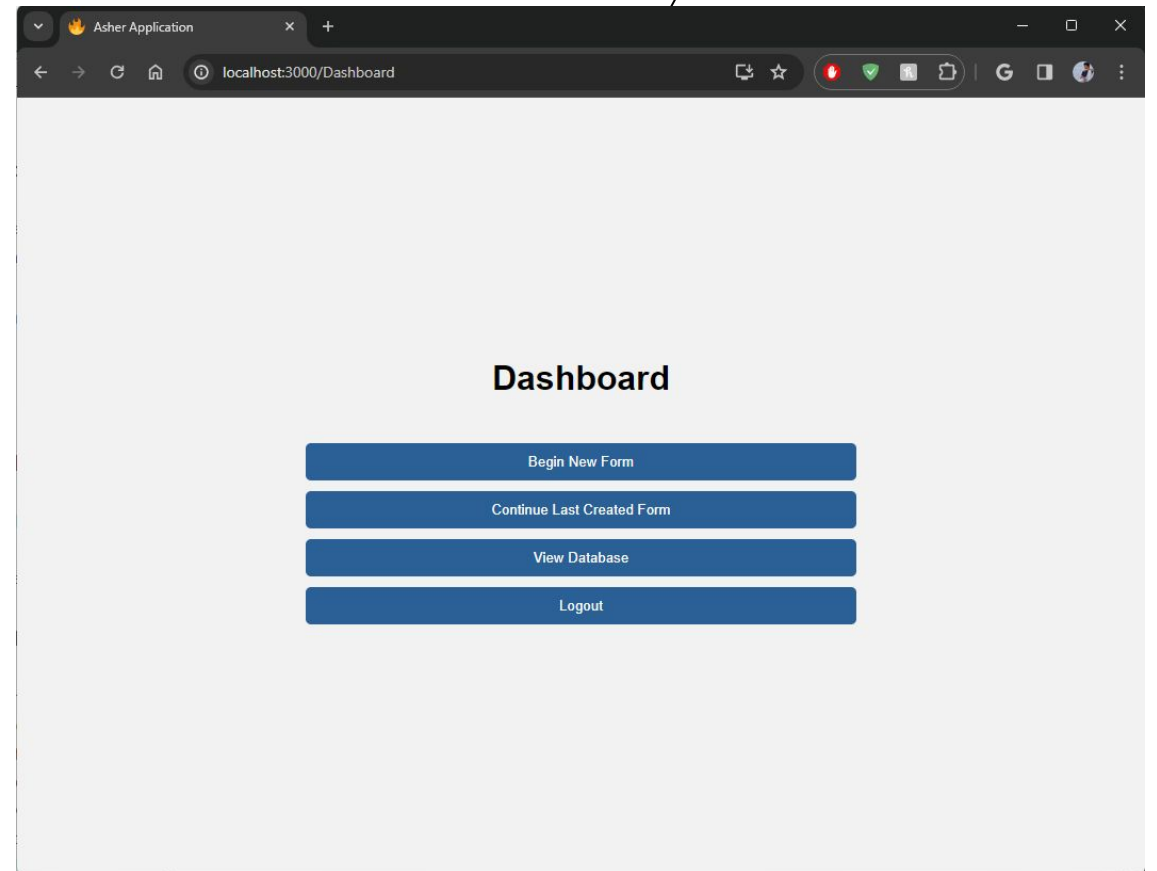


DEMONSTRATION
OF
USER INTERFACE



Login Page

Dashboard Page




Asher Application

localhost:3000/Form

FireWatch

Choose File No file chosen



Ash Color:

Site Name / Plot Name

User / Team Name

Ash Depth (cm):

Have the roots been altered from pre-fire conditions? Yes No

Moisture level: Wet Dry

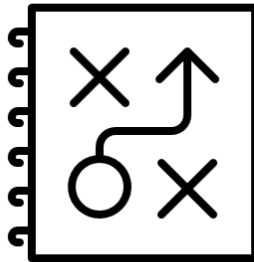
Ash / Soil Description

Please add any extra descriptions

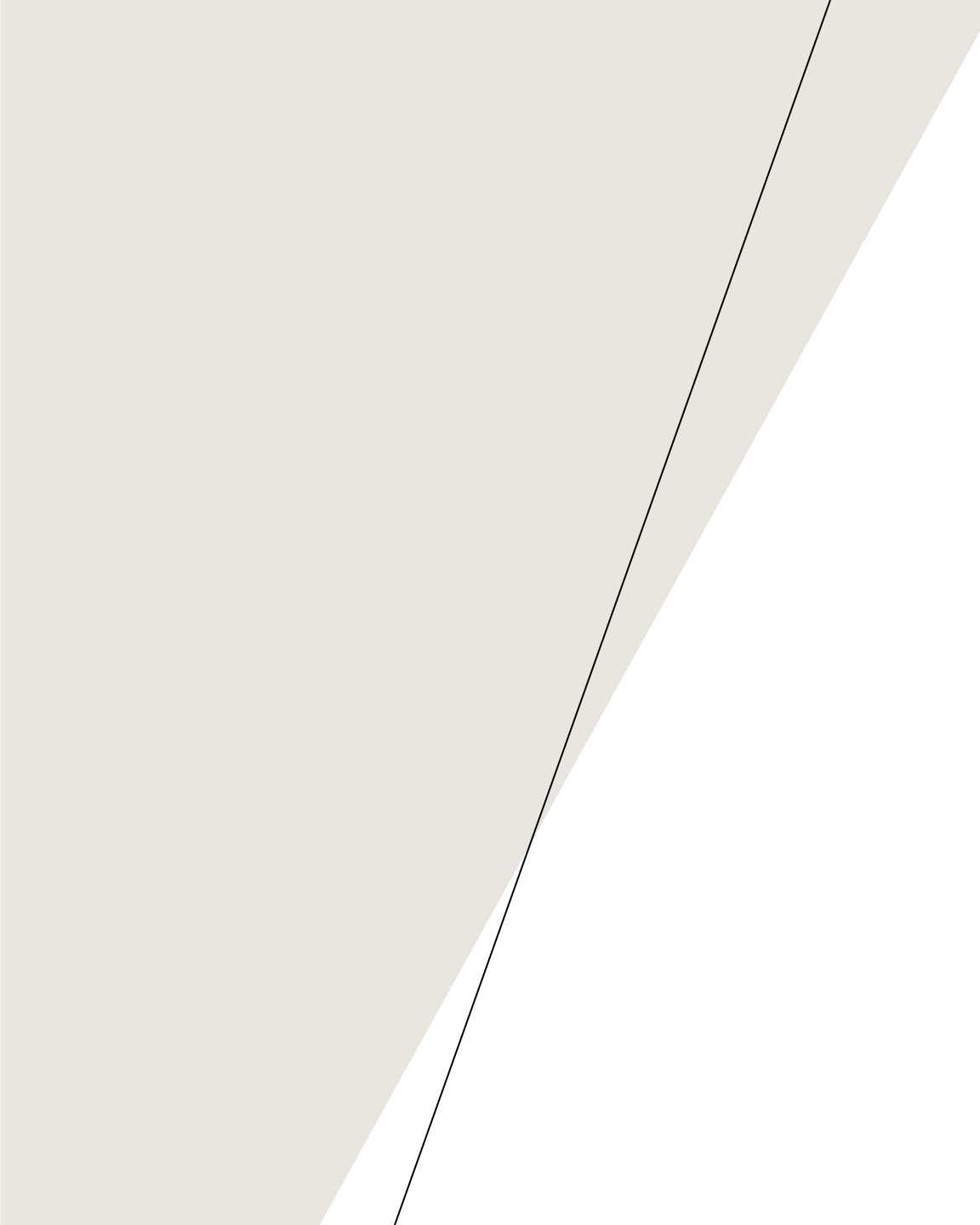
Submit

Form Page

USABILITY CONCERNS



Having access to the database on the field ash color mismatches, accidentally deleting a form in progress, uploading the wrong information, if we have a login functionality there may be issues when a user or team is attempting to login.



DEVELOPMENT STATUS AND FUTURE PLAN

Future Plans

Some of our next steps are to make the ash scale image interactable so the user can click on the ash color and it will be able to record and upload this information to the database.

We still have to get local forage working on our application so that the form data can actually be saved and uploaded.

We need to look into having a slider for our webpage so the user can scroll.

We want to give the user the ability to download their form data as a csv file that can then be emailed to our scientists.

We will add a help icon that will give a sample on some of the sections in case users do not know what to do.

We also would like to add sizing changes depending on the type of device the user is using. For example, when viewing our application with a Ipad pro there is a lot of white space on either side of the form that we could utilize.



THANK YOU

Any Questions?